

## Illustrated Parts Catalog

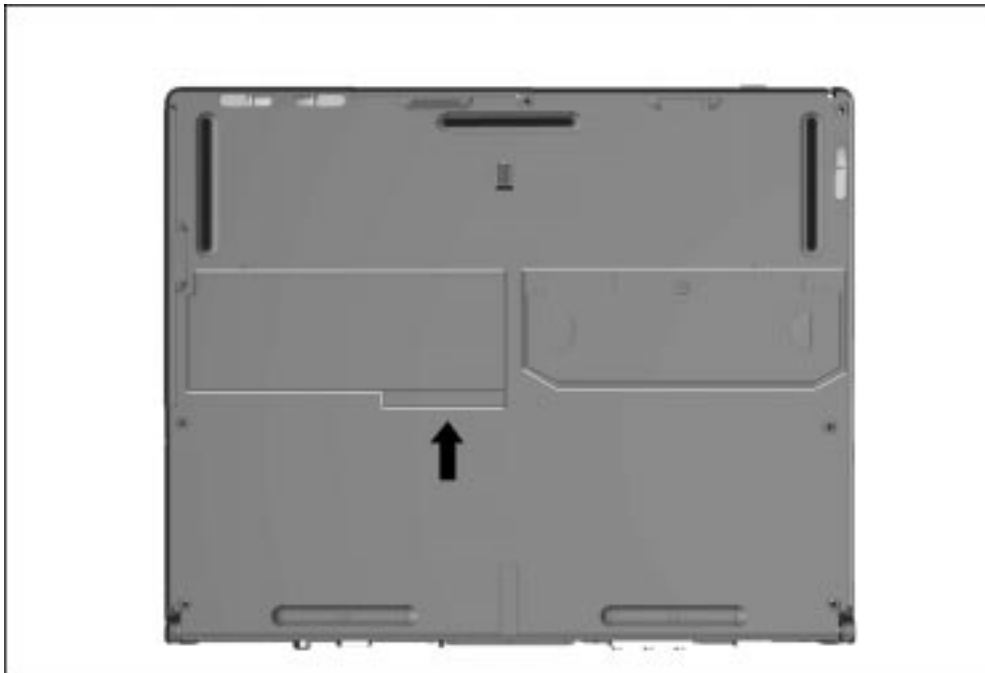
**IMPORTANT:** Various spare parts for the Armada 7700 Series of Personal Computers may appear to be identical to corresponding spare parts on the Armada 7800 computer. However, due to color and mechanical differences, Armada 7700 spare parts should never be used when servicing an Armada 7800 computer.



**CAUTION:** Only spare parts listed in this chapter should be used to service an Armada 7800 computer. Failure to follow this caution can cause damage to the computer.

### 3.1 Serial Number Location

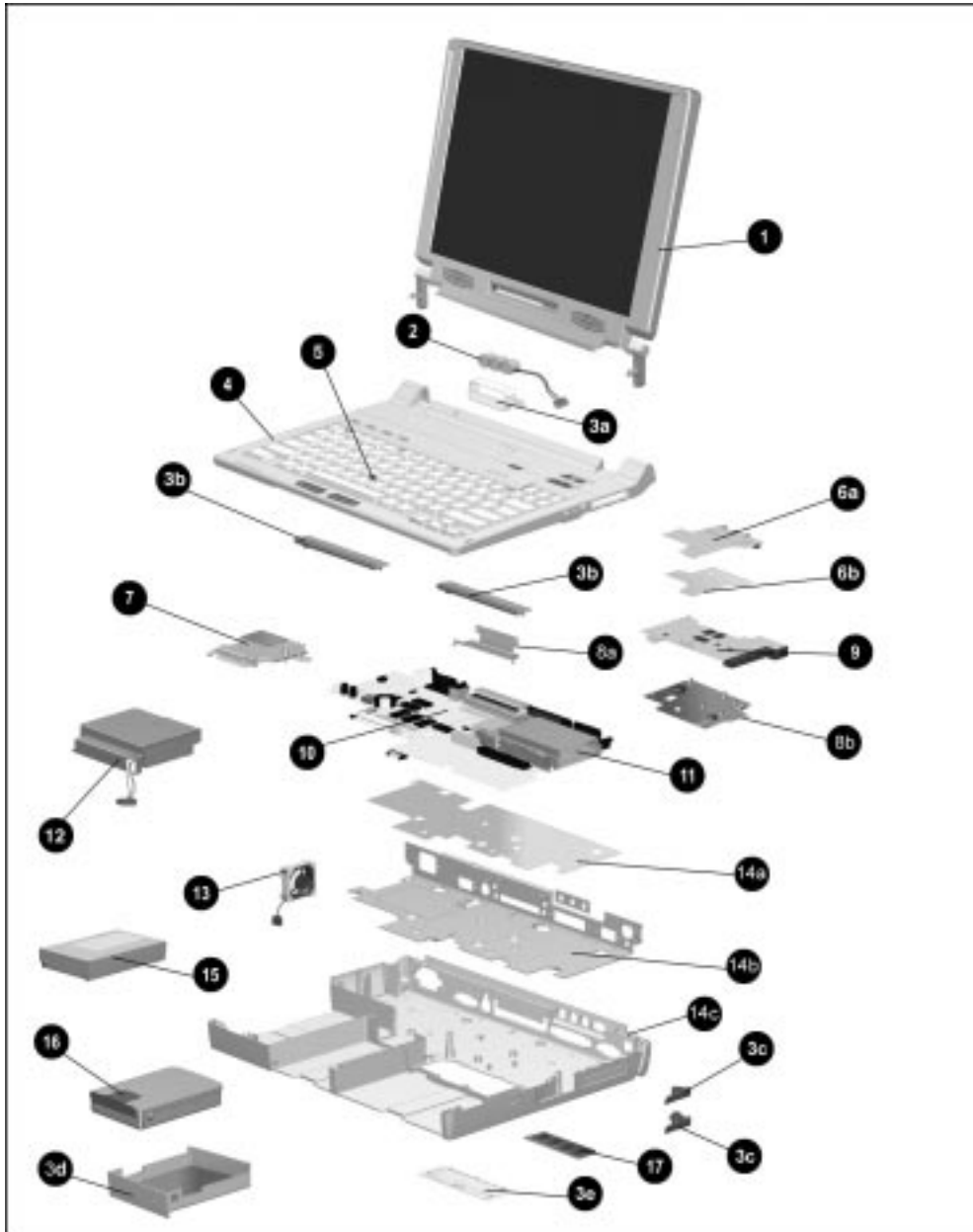
When ordering parts or requesting information, provide the computer serial number and model number located on the bottom of the computer (Figure 3-1). Refer to Table 1-1 for an explanation of the model number.



**Figure 3-1.** Serial Number Location

.....

## 3.2 Computer System Major Components



**Figure 3-2.** Computer System Major Components

**Table 3-1**  
**Spare Parts: Computer System Major Components**

Item	Description	Spare Part Number
1	Display assembly (spared as "hingeup" assembly, includes logo kit, audio assembly bracket thermal pad, and keyboard label kit; display size varies depending on model)	
	14.1-inch, XGA, CTFT (use only on computers with config. codes starting with "CB6", "CD", "CH", and "CZ")	340120-001
	13.3-inch, XGA, CTFT (use only on computers with config. codes starting with "CB4", "BS", and "BZ")	315015-001
	<b>NOTE:</b> Use the hinge up assembly to perform all field repairs for units that are under warranty. Out of warranty and depot repairs should be performed using the appropriate component(s) listed below. This policy applies to both the 14.1- and 13.3-inch displays. The 14.1- and 13.3-inch displays are not interchangeable.	
	Display enclosure (includes all display components except panel and inverter; also includes logo kit, audio assembly bracket thermal pad, keyboard label kit, and screw covers)	
	14.1-inch, XGA, CTFT (use only on computers with config. codes starting with "CB6", "CD", "CH", and "CZ")	340122-001
	13.3-inch, XGA, CTFT (use only on computers with config. codes starting with "CB4", "BS", and "BZ")	315184-001
	Display inverter board (includes logo kit, audio assembly bracket thermal pad, keyboard label kit, and screw covers)	315758-001
	Display panel (includes logo kit, audio assembly bracket thermal pad, keyboard label kit, and screw covers)	
	14.1-inch, XGA, CTFT (use only on computers with config. codes starting with "CB6", "CD", "CH", and "CZ")	340121-001
	13.3-inch, XGA, CTFT (use only on computers with config. codes starting with "CB4", "BS", and "BZ")	315759-001
2	Auxiliary battery (includes keyboard label kit)	220807-001
	Miscellaneous Plastics Kit, includes:	313916-001
3a	Auxiliary battery retainer	Not Illustrated:
3b	Left & right rear covers	RJ-11 cover
3c	Top & bottom PC Card eject levers	DAA cover plug
3d		Keyboard label kit
3e	Hard drive tray	
	Memory expansion slot cover	
4	Keyboard assembly (includes keyboard label kit and DAA cover)	314963-XXX
	Arabic -171 German -041 Portuguese -131	
	Belgian -181 Italian -061 Spanish -071	
	Czech -221 International -002 Swedish -101	
	Danish -081 Japanese -291 Swiss -111	
	Dutch -331 Korean -AD1 U.K. English -031	
	French -051 Latin American U.S. English/Canadian -001	
	French Canadian -121 Norwegian -091	
5	EasyPoint III pointing device caps	314938-001
	Audio/USB board, includes:	
	use only on computers with config. codes starting with "CD" and "CH"	400131-001
	use only on computers with config. codes starting with "CB" and "B"	314949-001
6a	Audio/USB board	RJ-11 cover plug (not illustrated)
6b	Audio/USB board insulator	Keyboard label kit
7	Processor board (processor speed varies by model; includes audio assembly bracket thermal pad and keyboard label kit)	
	Intel Mobile 366-MHz Pentium II with MMX technology (use only on computers with config. codes starting with "CD" and "CH")	400133-001

.....

Intel Mobile 333-MHz Pentium II with MMX technology (Configure to order (CTO) option only, use only on computers with config. code "CDJZ")	342678-001
Intel Mobile 300-MHz Pentium II with MMX technology (use only on computers with config. codes starting with "BZ8Z", "CB6", and "CDJZ")	202838-001
Intel Mobile 266-MHz Pentium II with MMX technology (use only on computers with config. codes starting with "BS", "BZ8Z", and "CB4")	314947-001

---

*continued*

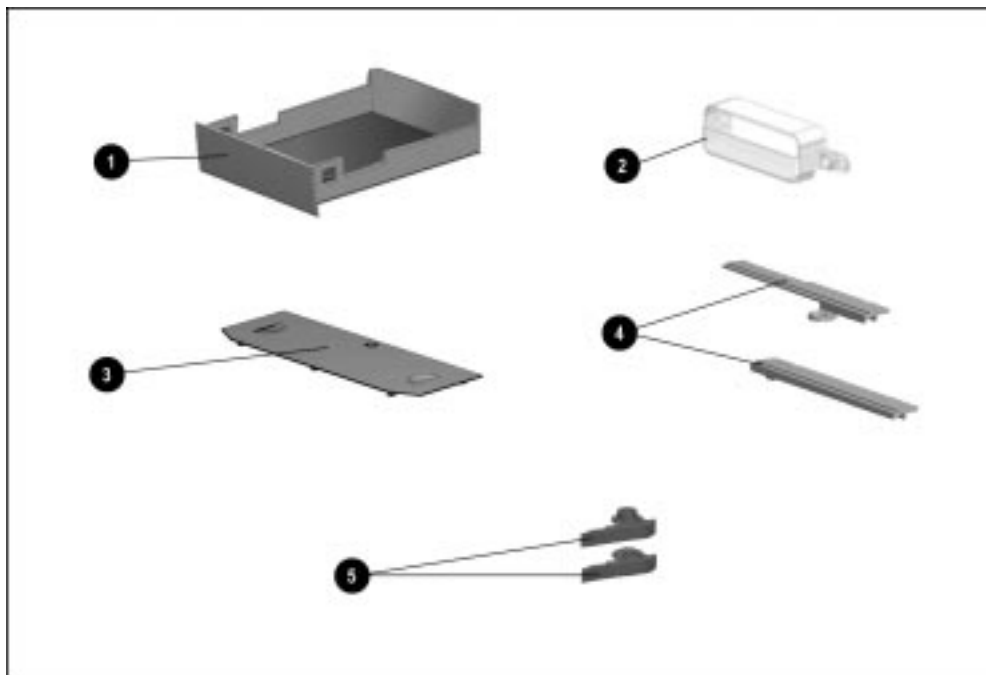
**Table 3-1** *Continued*

Item	Description		Spare Part Number
	Miscellaneous Hardware Kit, includes:		314959-001
8a	Expansion connector shield	Not illustrated:	
8b	Audio assembly bracket	Processor module assembly ground clips (2) Keyboard label kit Audio assembly bracket thermal pad Keyboard thermal pad base feet keyboard connector insulator	
9	Modem board assembly (includes insulator and keyboard label kit; modem speed varies depending on model)		
	56 Kbps (use only on computers with config. codes starting with "CH" and "CD")	33.6 Kbps (use only on computers with config. codes starting with "BS", "BZ", and "CB")	
	U.S. model	342686-001	U.S. model 313906-001
	International model	342686-002	International 313906-002
	Japanese	342686-291	model 313906-291
	Audio only board (includes RJ-11 cover plug and keyboard label kit)		314956-001
10	System board		
	supports 366- and 333-MHz processor board (use only on computers with config. codes starting with "CD" and "CH")		342677-001
	supports 300-MHz processor board (use only on computers with config. codes starting with "BZ8Z", "CB6", and "CDJZ")		202842-001
	supports 266-MHz processor board (use only on computers with config. codes starting with "BS", "BZ8Z", and "CB4")		314937-001
	<b>NOTE:</b> All system boards include the following components (not illustrated):		
	Expansion connector shield	Audio assembly bracket	
	Keyboard connector	thermal pad	
	insulator	Keyboard label kit	
11	PC Card assembly (includes audio assembly bracket thermal pad and keyboard label kit)		315114-001
12	Power supply (includes keyboard label kit)		
	45 watt (use only on computers with config. codes starting with "C")		315141-001
	original, need wattage (use only on computers with config. codes starting with "B")		220699-001
13	Fan (includes isolator and keyboard label kit)		267862-002
	CPU base assembly, includes:		314940-001
14a	I/O bracket insulator		
14b	I/O bracket		
14c	Base assembly, includes:	Base assembly	I/O bracket
	Base feet	Hard drive release assembly	Top and bottom PC Card doors
	Keyboard label kit	Battery release assembly	Left and right tilt feet
	Keyboard connector shield	MultiBay release assembly	Security clip
	I/O bracket insulator	Expansion connector shield	Infrared lens
15	Battery pack, Li-ion		
	use only on computers with config. code starting with "CD" and "CH"		400130-001
	use only on computers with config. code starting with "B" and "CB"		314939-001

.....

16	Hard drive (includes Armada 7700 and 7800 hard drive trays; hard drive size varies depending on model)	
	14.1 GB (use only on computers with config. codes starting with "CD" and "CH")	400132-001
	10.0 GB (Configure to order (CTO) option only, use only on computers with config. code "CDJZ")	342676-001
	8.1 GB (use only on computers with config. codes "BZ8Z", "CB41" through "CB43", "CB61" through "CB63", and "CDJZ")	315081-001
	5.0 GB (use only on computers with config. codes "BZ8Z", "BS81" through "BS86", and "CB64" through "CB69")	315140-001
17	Memory expansion board (amount of memory varies depending on model)	310345-001
	128 MB, 66 MHz, SDRAM, SODIMM	313918-001
	64 MB, 66 MHz, SDRAM, SODIMM	313911-001
	32 MB, 66 MHz, SDRAM, SODIMM	313917-001
	16 MB, 66 MHz, SDRAM, SODIMM	
	3-volt Lithium disc cell battery (not illustrated)	117099-001

### 3.3 Miscellaneous Plastics Kit Components



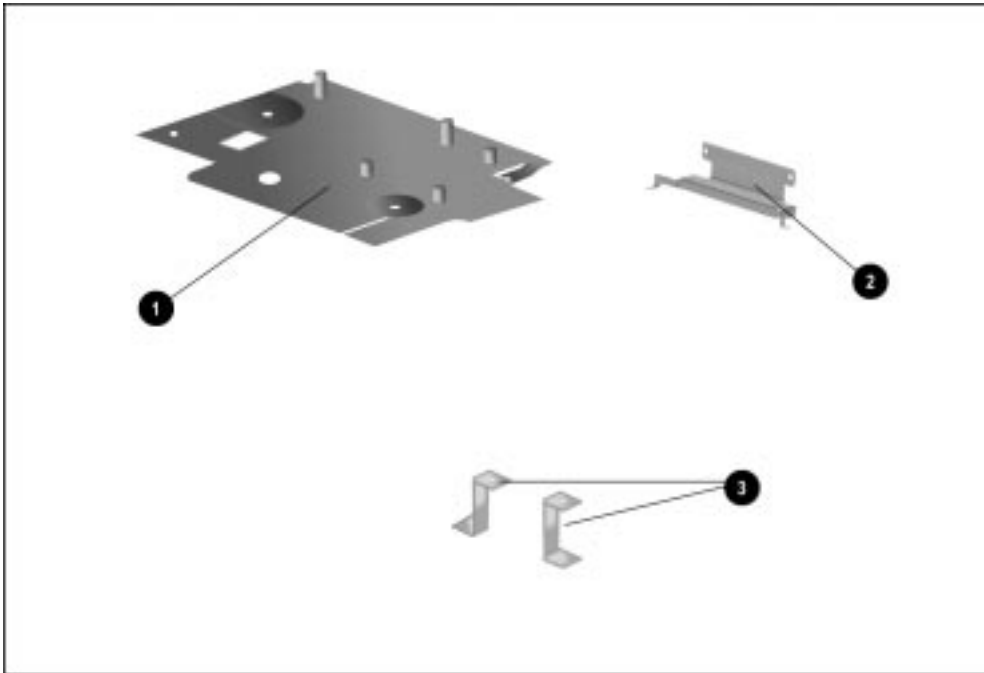
**Figure 3-3.** Miscellaneous Plastics Kit Components

**Table 3-2**  
**Miscellaneous Plastics Kit Components**  
**Spare Part Number 313916-001**

Item	Description
1	Hard drive tray
2	Auxiliary battery retainer
3	Memory expansion slot cover
4	Left & right rear covers
5	Top & bottom PC Card eject levers
Not Illustrated:	
RJ-11 cover	
DAA cover plug	
Keyboard label kit	

.....

## 3.4 Miscellaneous Hardware Kit Components

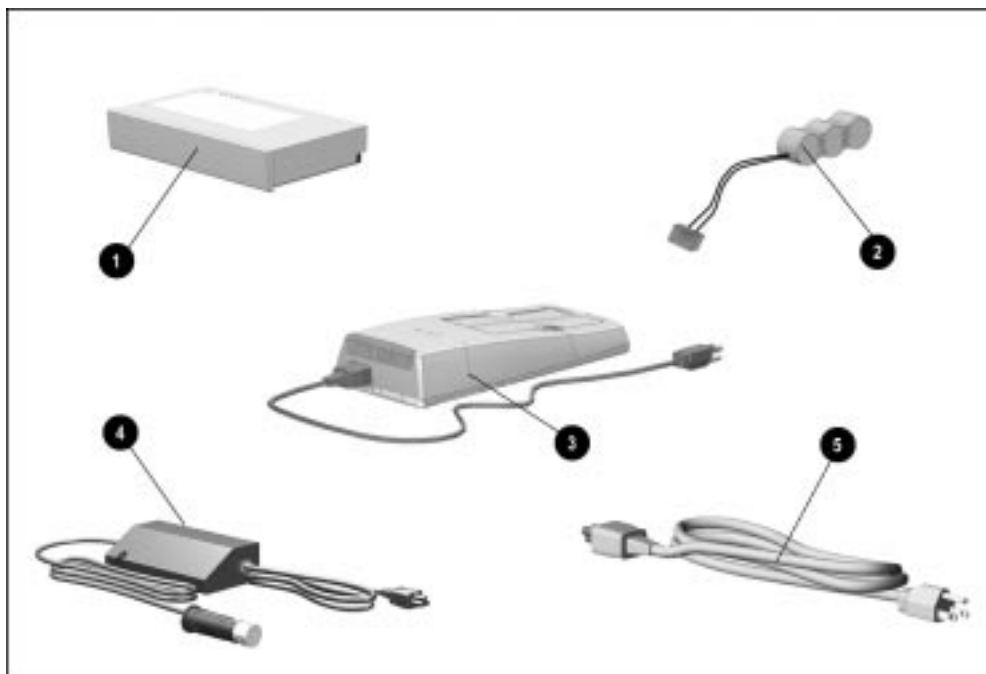


**Figure 3-4.** *Miscellaneous Hardware Kit Components*

**Table 3-3**  
**Miscellaneous Hardware Kit Components**  
**Spare Part Number 314959-001**

Item	Description
1	Audio assembly bracket
2	Expansion connector shield
3	Processor module assembly ground clips (2)
Keyboard label kit (not illustrated)	

## 3.5 Power Equipment

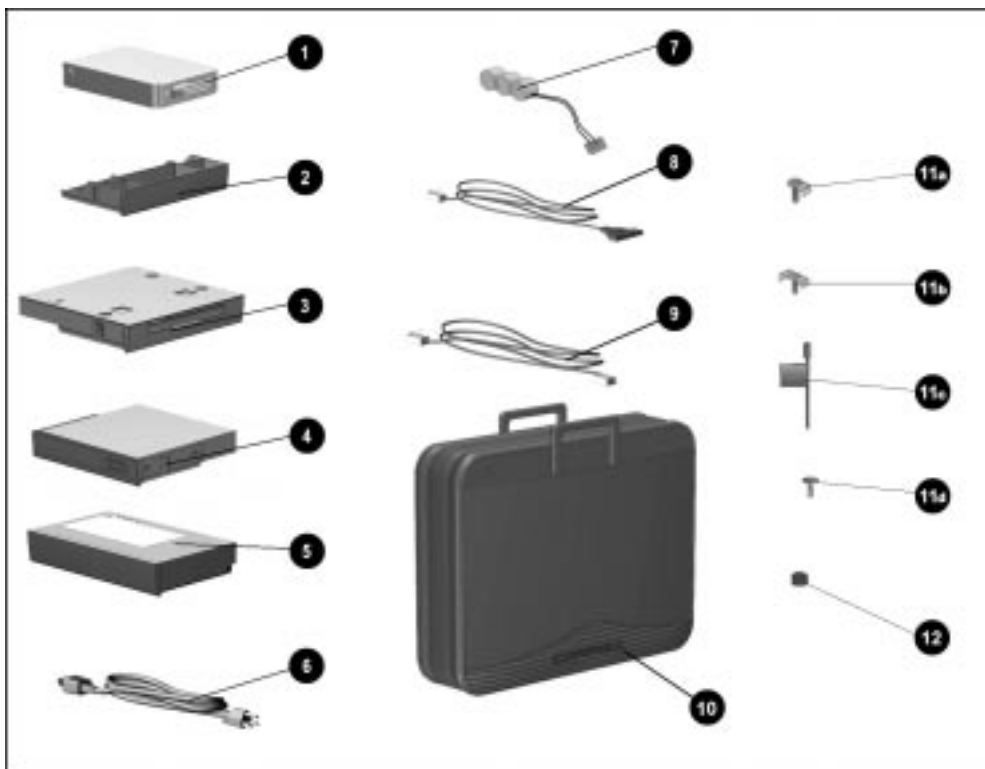


**Figure 3-5.** Power Equipment

**Table 3-4**  
**Spare Parts: Power Equipment**

Item	Description			Spare Part Number
1	Battery pack, Li-ion			400130-001
	use only on computers with config. code starting with "CD" and "CH"			314939-001
2	use only on computers with config. code starting with "B" and "CB"			220807-001
	Auxiliary battery			277734-001
3	Battery charger			313919-001
4	Automobile/aircraft adapter			315083-001
	Automobile/aircraft adapter cable			
5	Power cord			
	Australian	314957-011	Korean	314957-AD1
	Danish	314957-081	French/German/Swiss	314957-111
	European	314957-002	U.K. English/Asia	314957-031
	Italian	314957-061	Pacific/Hong Kong	
	Japanese	314957-291	U.S. English	314957-001

### 3.6 Items that Ship with the Computer



**Figure 3-6.** Items that Ship with the Computer

**Table 3-5**  
**Items that Ship with the Computer**

Item	Description	Spare Part Number
1	Hard drive (includes Armada 7700 and 7800 hard drive trays; hard drive size varies depending on model)	
	14.1 GB (use only on computers with config. codes starting with "CD" and "CH")	400132-001
	10.0 GB (Configure to order (CTO) option only, use only on computers with config. code "CDJZ")	342676-001
	8.1 GB (use only on computers with config. codes "BZ8Z", "CB41" through "CB43", "CB61" through "CB63", and "CDJZ")	315081-001
	5.0 GB (use only on computers with config. codes "BZ8Z", "BS81" through "BS86", and "CB64" through "CB69")	315140-001

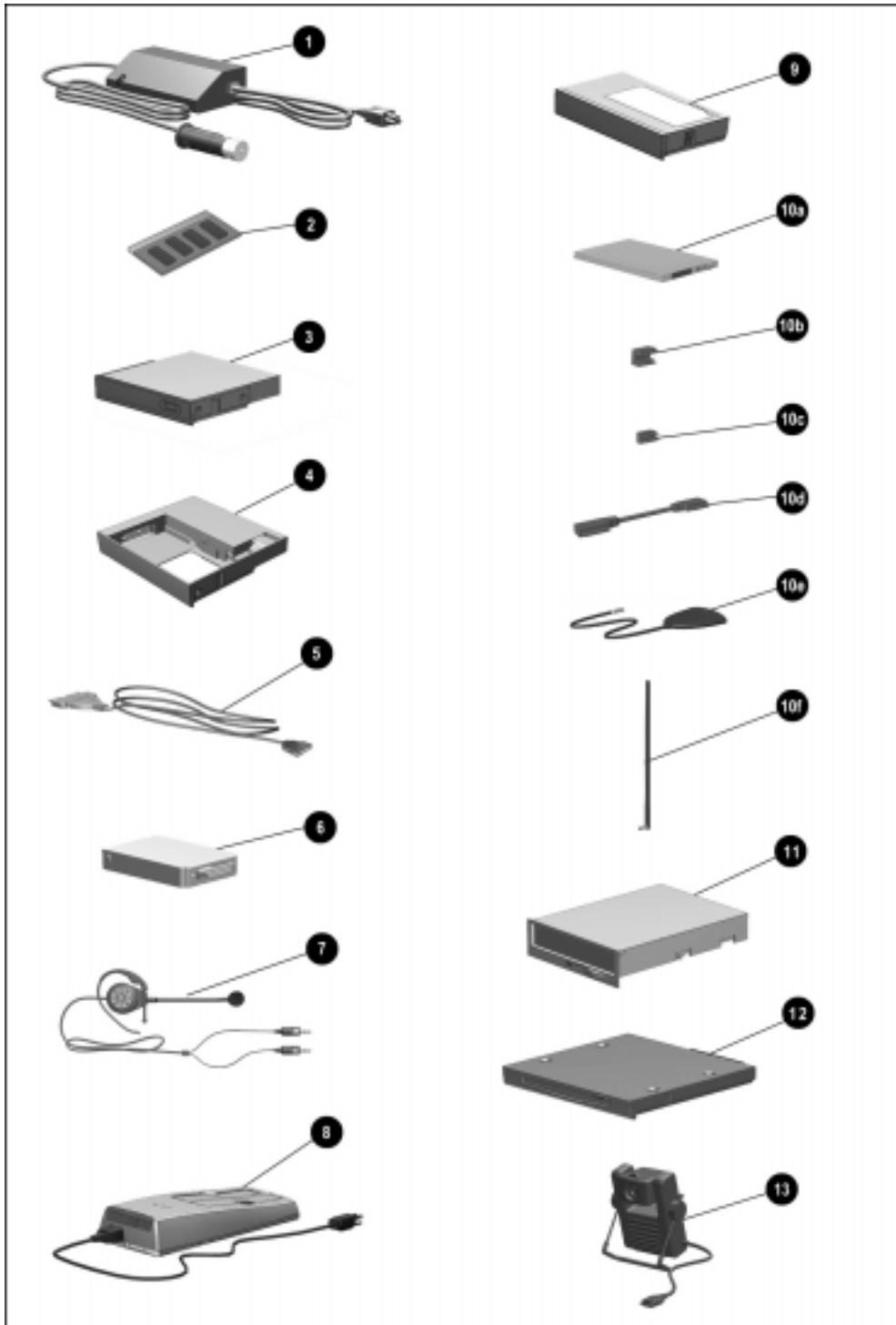
*continued*

Table 3-5 *Continued*

Item	Description	Spare Part Number
2	MultiBay weight saver (ships in accessory box)	315113-001
3	Diskette drive, 1.44-megabyte, 3.5-inch (ships in accessory box)	314941-001
4	CD-ROM drive (CD-ROM drive speed varies by model) 24-speed Max (requires use of removable drive MultiBay adapter) standard equipment on computer models with config. codes "CB41" through "CB43" and "CB64" through "CB69"	100044-001
	20-speed Max standard equipment on computer models with config. codes "BS81" through "BS86"	314936-001
5	Battery pack, Li-ion use only on computers with config. code starting with "CD" and "CH"	400130-001
	use only on computers with config. code starting with "B" and "CB"	314939-001
6	Power cord Australian 314957-011 Danish 314957-081 European 314957-002 Italian 314957-061 Japanese 314957-291 Korean 314957-AD1	French/German/ Swiss 314957-111 U.K. English/ Asia Pacific/ Hong Kong 314957-031 U.S. English 314957-001
7	Auxiliary battery	220807-001
8	Telephone cable (country specific)	138609-001
9	Modem cable (country specific)	248080-001
10	Slipcase (Europe/Middle East/Africa only)	315108-001
	Security kit	296035-001
11a	Single bay security screw	
11b	Dual bay security screw	
11c	Security wrench	
11d	Memory expansion slot cover security screw	
12	EasyPoint III pointing device caps (2)	314938-001
13	DVD-ROM drive (standard equipment on computer models with config. codes "CB61" through "CB63" and config. codes starting with "CHR", "CDJ3", and "CDJ4")	202837-001
	DVD-ROM drive MultiBay adapter	319665-001

.....

## 3.7 Options



**Figure 3-7.** Options

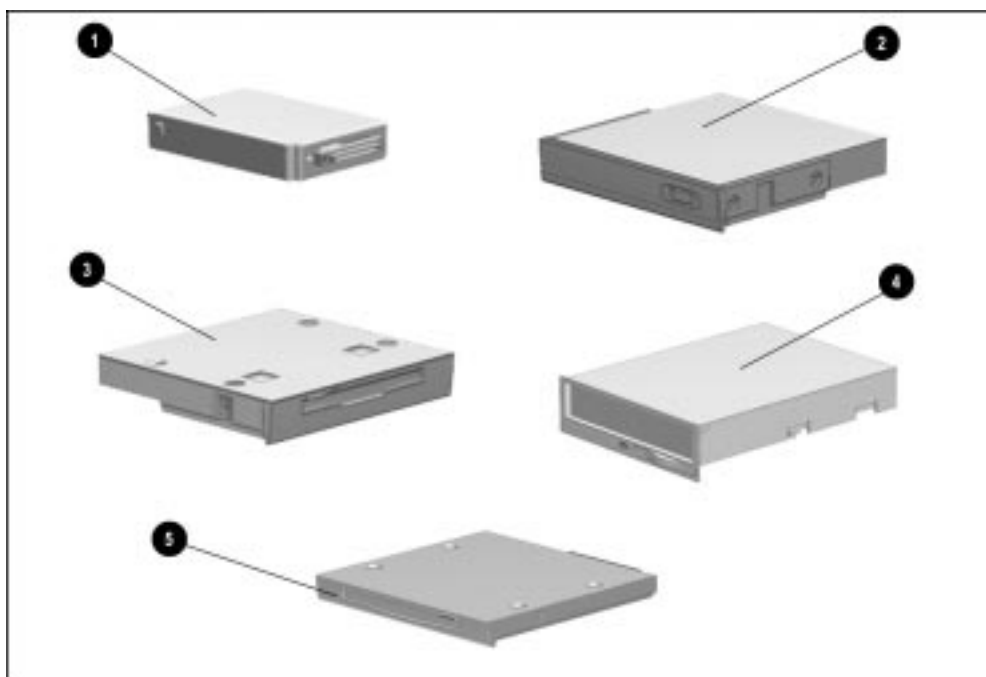
.....

**Table 3-6**  
**Spare Parts: Options**

Item	Description	Spare Part Number	Option Part Number
1	Automobile/aircraft adapter	313919-001	296537-B21
2	Memory expansion board		
	128 MB	310345-001	315177-B21
	64 MB	313918-001	314891-B21
	32 MB	313911-001	314890-B21
	16 MB	313917-001	314889-B21
3	CD-ROM drive (includes slipcase; CD-ROM drive speed varies by model)		
	24-speed Max	100044-001	402321-B21
	(requires use of removable drive MultiBay adapter; standard equipment on computer models with config. codes "CB41" through "CB43" and "CB64" through "CB69")		
	20-speed Max	314936-001	297707-B25
	standard equipment on computer models with config. codes "BS81" through "BS86"		
4	Armada 7000 Hard Drive MultiBay Adapter	296586-002	267868-001
5	Cellular phone cable		
	GE & Ericson CT7000	212035-001	185272-001
	Motorola-MT/Elite	212031-001	185268-001
	Motorola-MicTac	212030-001	185267-001
	Nokia-232	212034-001	185271-001
	Nokia-2120	212033-001	185270-001
6	Hard drive (spare part number includes Armada 7700 and 7800 hard drive trays; option part number includes hard drive MultiBay adapter and hard drive carrying case; hard drive size varies depending on model)		
	14.1 GB (use only on computers with config. codes starting with "CD" and "CH")	400132-001	342670-B21
	10.0 GB (Configure to order (CTO) option only, use only on computers with config. code "CDJZ")	342676-001	387434-B21
	8.1 GB (use only on computers with config. codes "BZ8Z", "CB41" through "CB43", "CB61" through "CB63", and "CDJZ")	315081-001	315043-B25
	5.0 GB (use only on computers with config. codes "BZ8Z", "BS81" through "BS86", and "CB64" through "CB69")	315140-001	297189-B25
7	Headset	273139-001	220460-001
8	Battery charger	277734-001	220461-001
9	Battery pack, Li-ion		
	use only on computers with config. code starting with "CD" and "CH"	400130-001	
	use only on computers with config. code starting with "B" and "CB"	314939-001	220463-B25

10a	SpeedPaq Cellular PC Card Kit,	221227-001	221202-001
10b	includes:		
10c	SpeedPaq Cellular PC Card		
10d	computer interconnect block		
10e	modem interconnect block		
10f	interconnect cable		
	remote antenna base		
	antenna		
	cellular PC Card software (not illustrated)		
11	External Diskette Drive Kit	290837-001	297186-B21
	External diskette drive cable	258575-002	n/a
12	SuperDisc LS-120 drive	327456-002	296502-B25
13	Portable Video Conferencing Kit	298450-001	296954-001
14	DVD-ROM drive (standard equipment on computer models with config. codes "CB61" through "CB63" and config. codes starting with "CHR", "CDJ3", and "CDJ4")	202837-001	314914-B25
	DVD-ROM drive MultiBay adapter	319665-001	n/a

## 3.8 Mass Storage Devices



**Figure 3-8.** Mass Storage Devices

**Table 3-7**  
**Spare Parts: Mass Storage Devices**

Item	Description	Spare Part Number
1	Hard drive (includes Armada 7700 and 7800 hard drive trays; drive size varies depending on model)	

.....

	14.1 GB (use only on computers with config. codes starting with "CD" and "CH")	400132-001
	10.0 GB (Configure to order (CTO) option only, use only on computers with config. code "CDJZ")	342676-001
	8.1 GB (use only on computers with config. codes "BZ8Z", "CB41" through "CB43", "CB61" through "CB63", and "CDJZ")	315081-001
	5.0 GB (use only on computers with config. codes "BZ8Z", "BS81" through "BS86", and "CB64" through "CB69")	315140-001
2	CD-ROM drive (CD-ROM drive speed varies by model) 24-speed Max (requires use of removable drive MultiBay adapter) standard equipment on computer models with config. codes "CB41" through "CB43" and "CB64" through "CB69"	100044-001
	20-speed Max standard equipment on computer models with config. codes "BS81" through "BS86"	314936-001
3	Diskette drive, 1.44-megabyte, 3.5-inch (standard equipment)	314941-001
4	External Diskette Drive Kit (available only as an option) External diskette drive cable (not illustrated)	290837-001 258575-002
5	SuperDisc LS-120 drive (available only as an option)	327456-002
6	DVD-ROM drive (standard equipment on computer models with config. codes "CB61" through "CB63" and config. codes starting with "CHR", "CDJ3", and "CDJ4") DVD-ROM drive MultiBay adapter	202837-001 319665-001

### 3.9 Miscellaneous

Table 3-8 Spare Parts: Miscellaneous (not illustrated)	
Description	Spare Part Number
Country Kit, Windows 95 Domestic	400129-001 315084-001
International	400129-021 315084-002
Miscellaneous Screw Kit (includes keyboard label kit)	314958-001

### 3.10 Documentation

Table 3-9 Spare Parts: Documentation (not illustrated)	
Description	Spare Part Number
<i>Armada 7800 Maintenance &amp; Service Guide</i>	314960-001
<i>Armada 7800 Illustrated Parts Map*</i>	314961-001
<i>ArmadaStation and Armada MiniStation Maintenance &amp; Service Guide</i>	296390-001
<i>ArmadaStation and Armada MiniStation Illustrated Parts Map*</i>	296391-001
<i>Armada 7800 Setup Poster &amp; Reference Guide: available in country kits or through fulfillment</i>	
*Not available in Europe, Middle East, or Africa	

